

Publicado em 08.01.2025

Atualizado em xx.xx.2025



Pag 2



Pag 9



Pag 10



Pag 13



Pag 16



Pag 17



Pag 20



Pag 24



Pag 25



Pag 26



Pag 30

# 18"-20/65-18

Domaine : Rallye Asphalte Wet

Dimension : 20 / 65 - 18

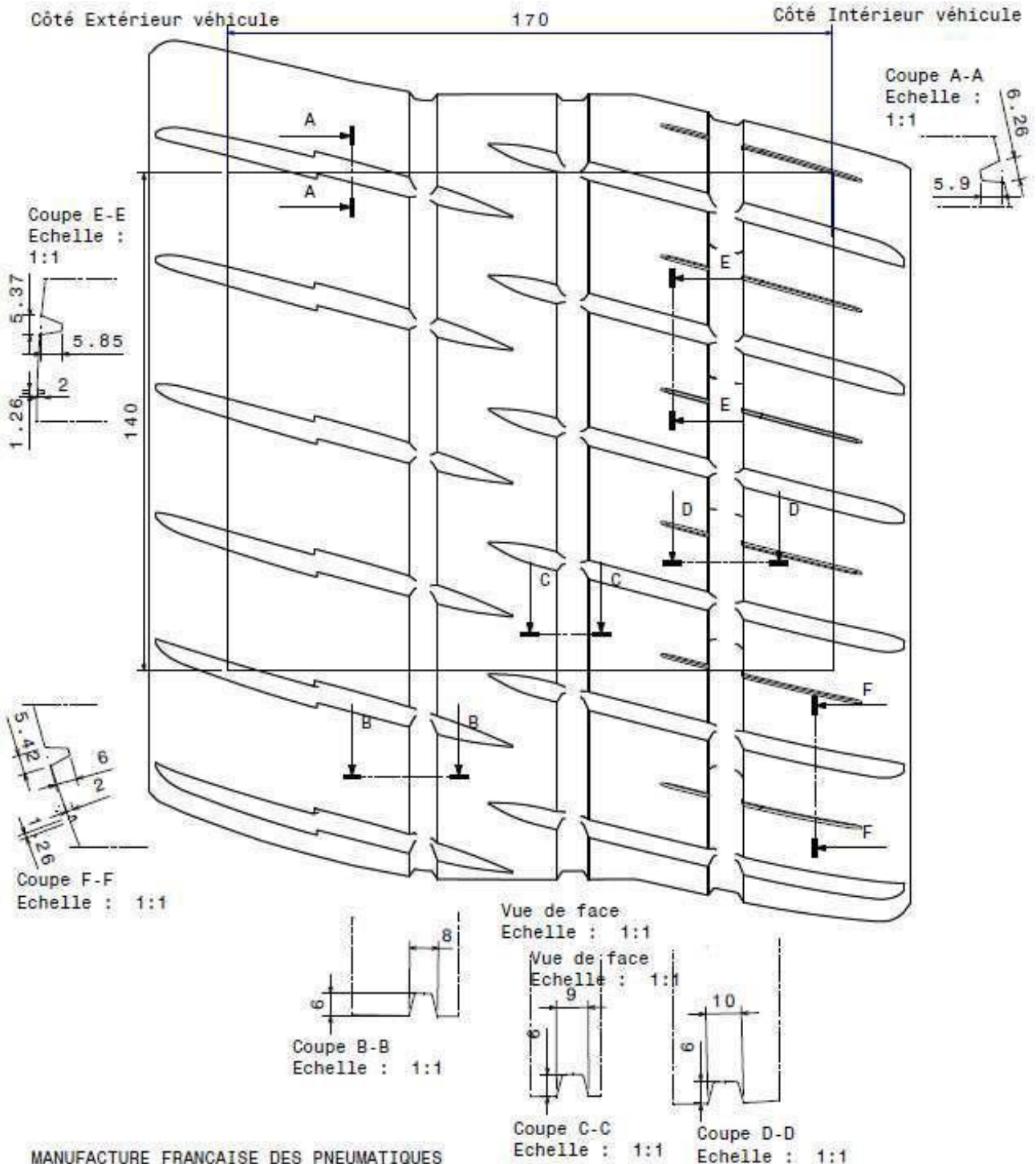
Plan de la sculpture : Pilot Sport A MW1

Entaillage Surfacique dans fenetre

reglementaire > ou = 27.5 % avec les entailles > 1.8 mm de profondeur comme avec les entailles > 5.5 mm de profondeur.



Clermont-Ferrand le 03/07/2019



# 17"-19/63-17

Domaine : Rallye Asphalte Wet

Dimension : 19 / 63 - 17

Plan de la sculpture : Pilot Sport A MWI

Entaillement surfacique dans fenêtre

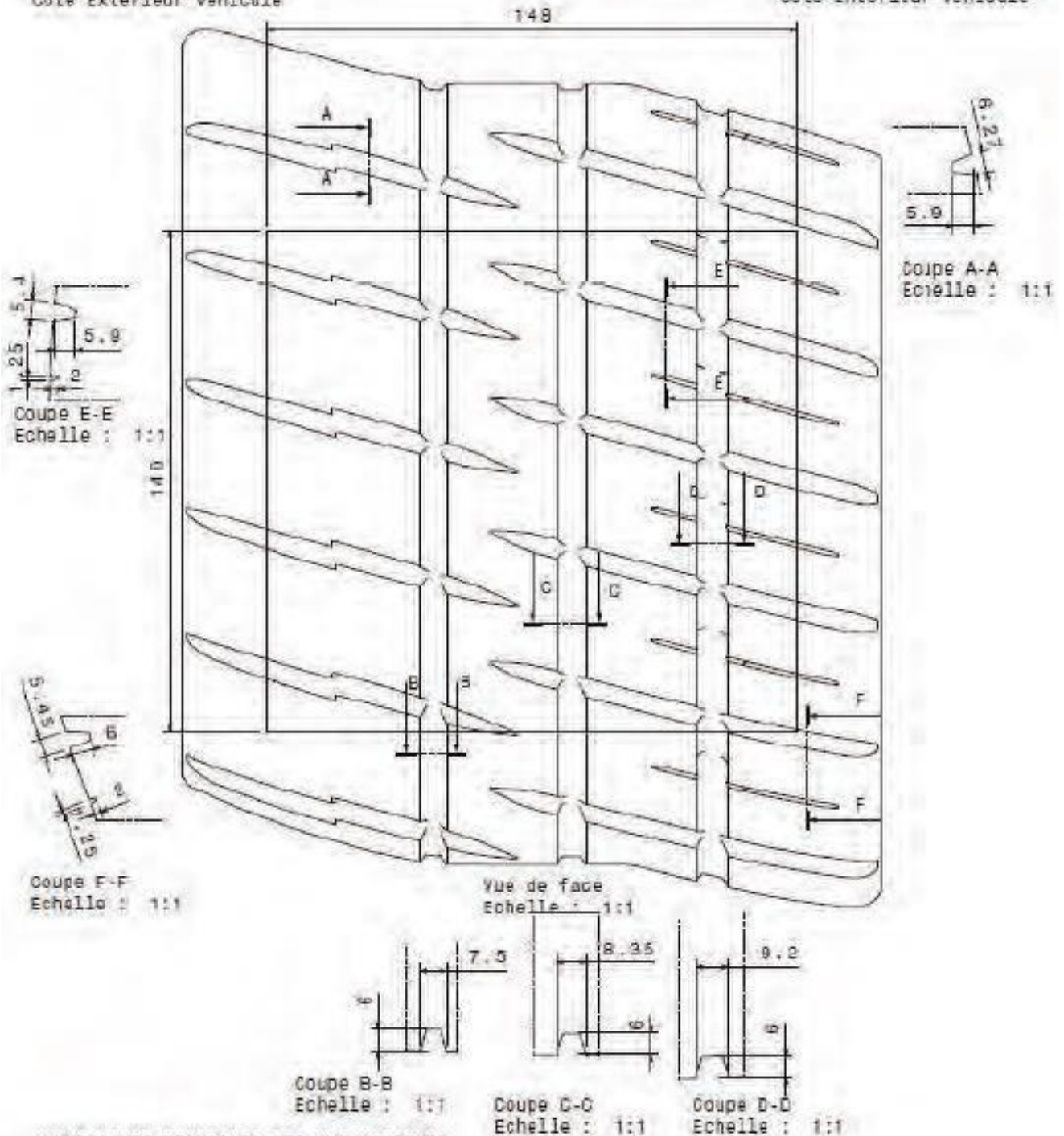
règlementaire > ou = 27.5 % avec les entailles > 1.8 mm de profondeur comme avec les entailles > 5.5 mm de profondeur.



clermont-ferrand le 18/09/2019

Côté Extérieur véhicule

Côté Intérieur véhicule



MANUFACTURE FRANCAISE DES PNEUMATIQUES  
MICHELIN CLERMONT-FERRAND  
PROPRIETE EXCLUSIVE DE NOTRE SOCIETE  
REPRODUCTION OU UTILISATION INTERDITE SANS  
NOTRE ACCORD ECRIT

# 16"-19/60-16

Domaine : Rallye Asphalte Wet

Dimension : 19 / 60 - 16

Plan de la sculpture : Pilot Sport A MW1

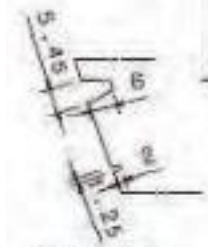
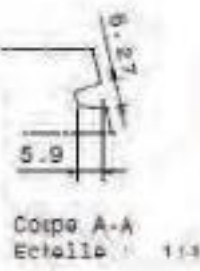
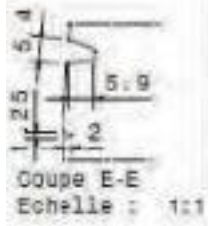
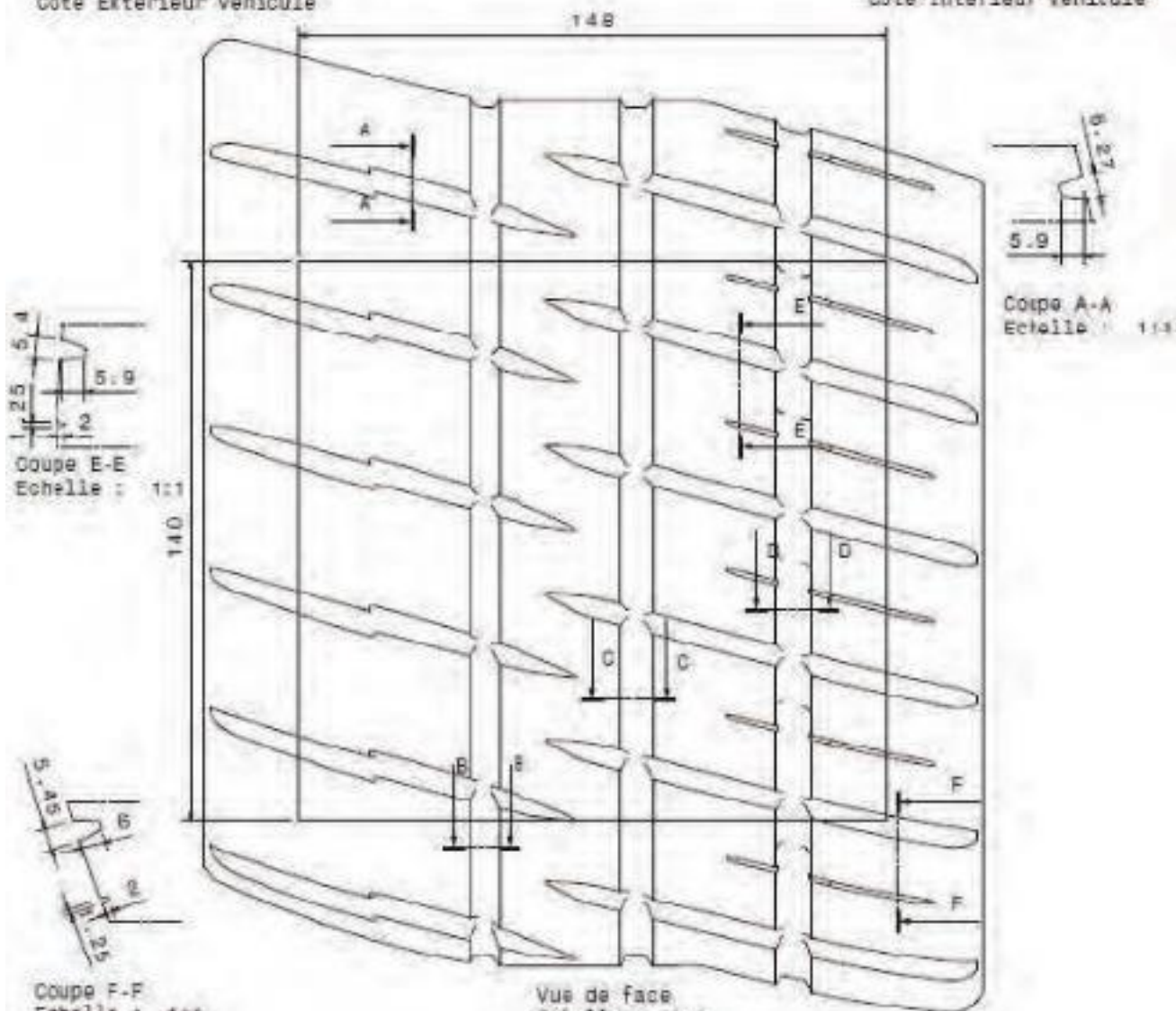
Entaillement Surfaccique dans fenetre  
reglementaire > ou = 27.5 % avec les entailles > 1.8 mm de  
profondeur comme avec les entailles > 5.5 mm de profondeur.



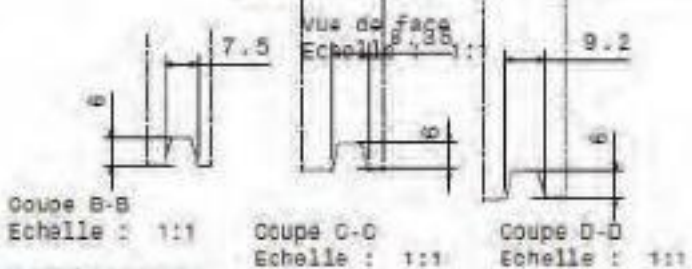
Clermont-Ferrand le 23/09/2018

Côté Extérieur véhicule

Côté Intérieur véhicule



Vus de face  
Echelle : 1:1



MANUFACTURE FRANCAISE DES PNEUMATIQUES  
MICHELIN CLERMONT-FERRAND  
PROPRIETE EXCLUSIVE DE NOTRE SOCIETE  
REPRODUCTION OU UTILISATION INTERDITE SANS  
NOTRE ACCORD ECRIT

# RGT Only – 24/65-18



## PE00

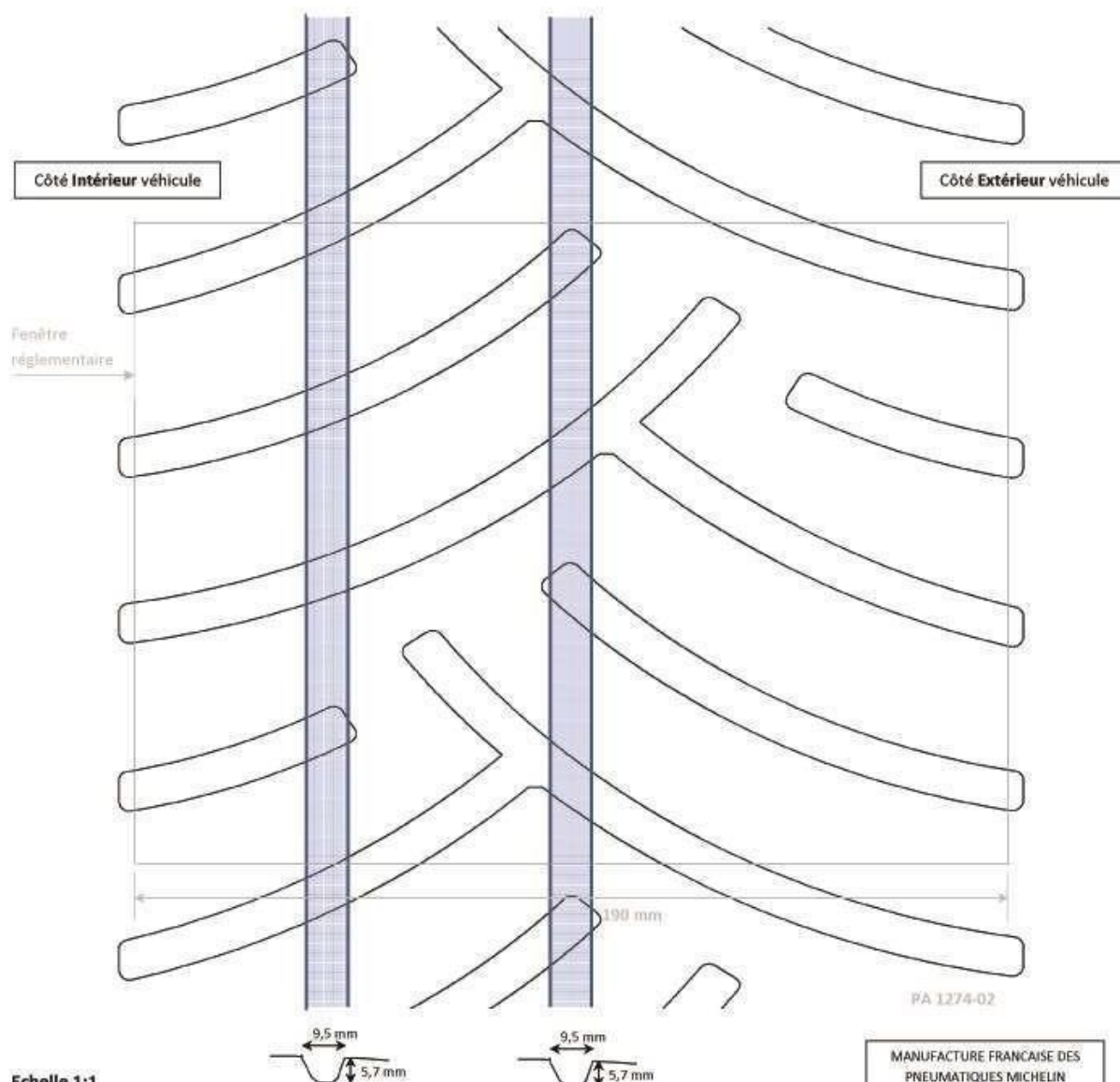
Domaine : Rallye Asphalte

Dimension : 24 / 65 - 18

Entaillement surfacique sur une fenêtre de 190 mm de large : 32,8 %

Clermont-Ferrand le 18/12/2013

Pneu Avant Droit



Echelle 1:1

5 cm

MANUFACTURE FRANÇAISE DES  
PNEUMATIQUES MICHELIN  
CLERMONT-FERRAND

PROPRIÉTÉ EXCLUSIVE DE NOTRE  
SOCIÉTÉ REPRODUCTION OU  
UTILISATION INTERDITE SANS  
NOTRE ACCORD ÉCRIT

# RGT Only – 24/65-18

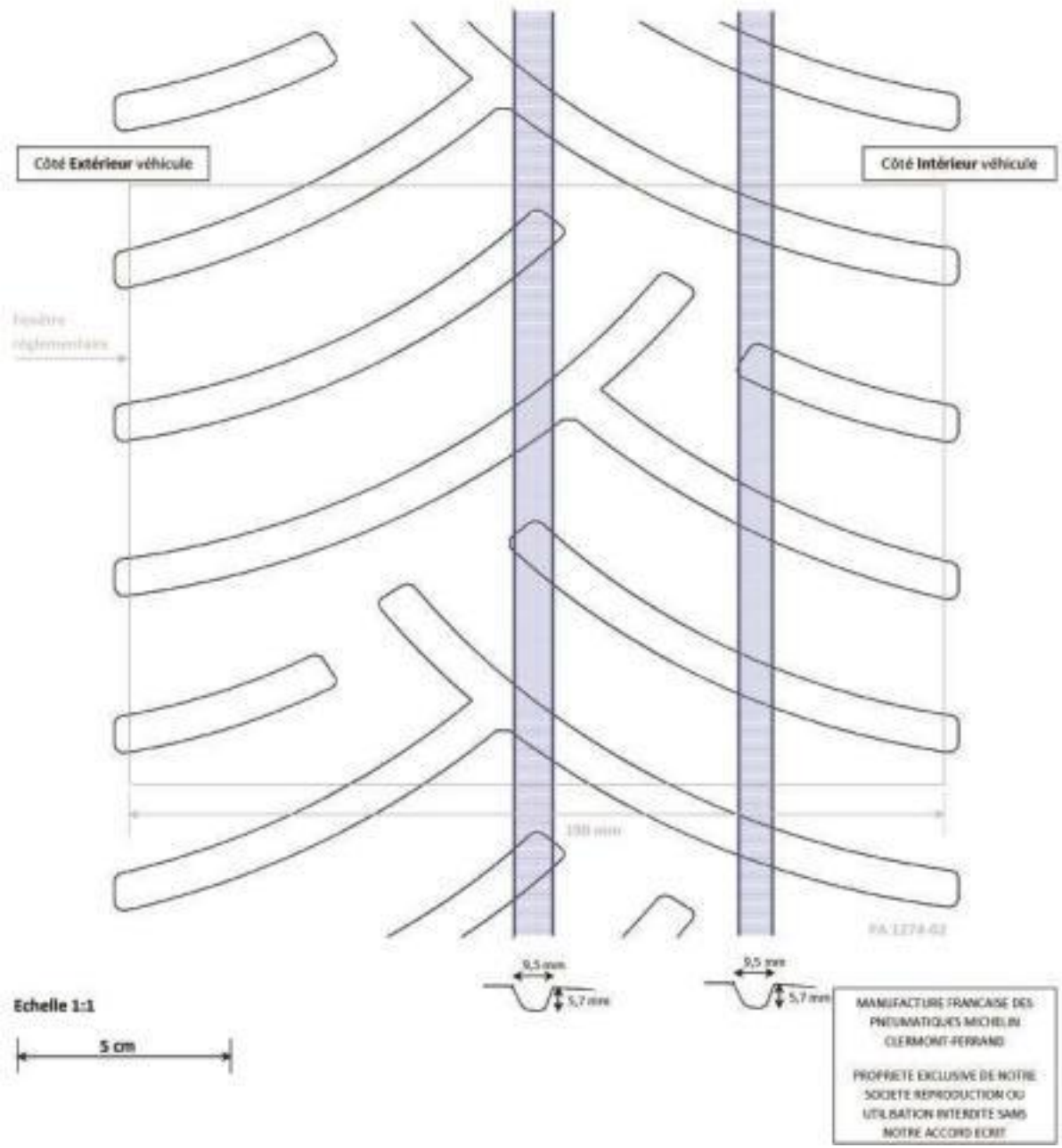


Domaine : Rallye Asphalte  
Dimension : 24 / 65 - 18  
Entaillement surfacique global : 32,8 %

**PE00**

Clermont-Ferrand le 18/12/2013

Pneu Avant Gauche



# RGT Only – 29/65-18



**PE00**

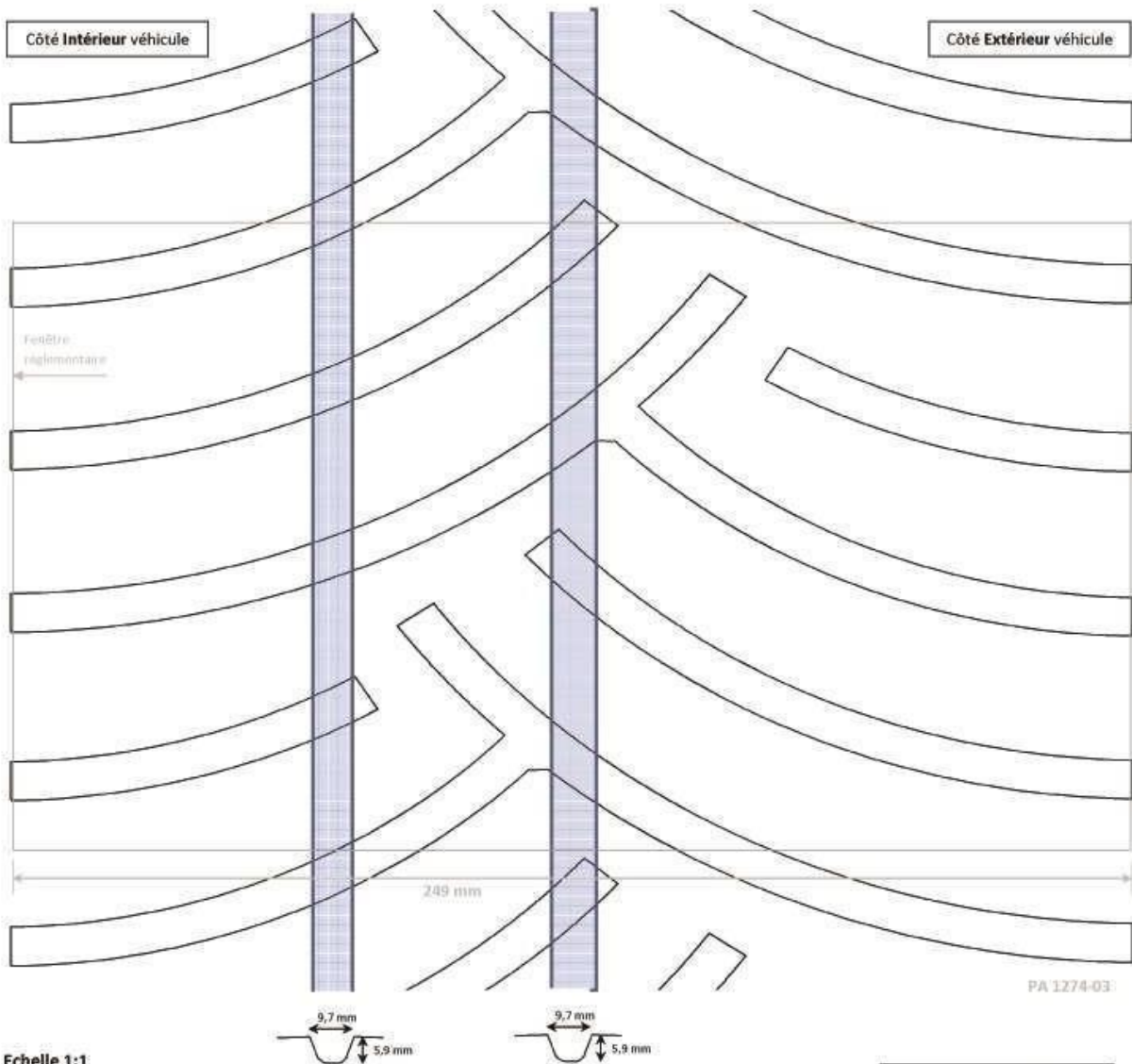
Domaine : Rallye Asphalte

Dimension : 29 / 65 - 18

Entaillement surfacique sur fenêtre de 249 mm de large : 31 %

Clermont-Ferrand le 18/12/2013

Pneu Arrière Droit



Echelle 1:1

5 cm

MANUFACTURE FRANCAISE DES  
PNEUMATIQUES MICHELIN  
CLERMONT-FERRAND

PROPRIETE EXCLUSIVE DE NOTRE  
SOCIETE REPRODUCTION OU  
UTILISATION INTERDITE SANS  
NOTRE ACCORD ECRIT

# RGT Only – 29/65-18



## PE00

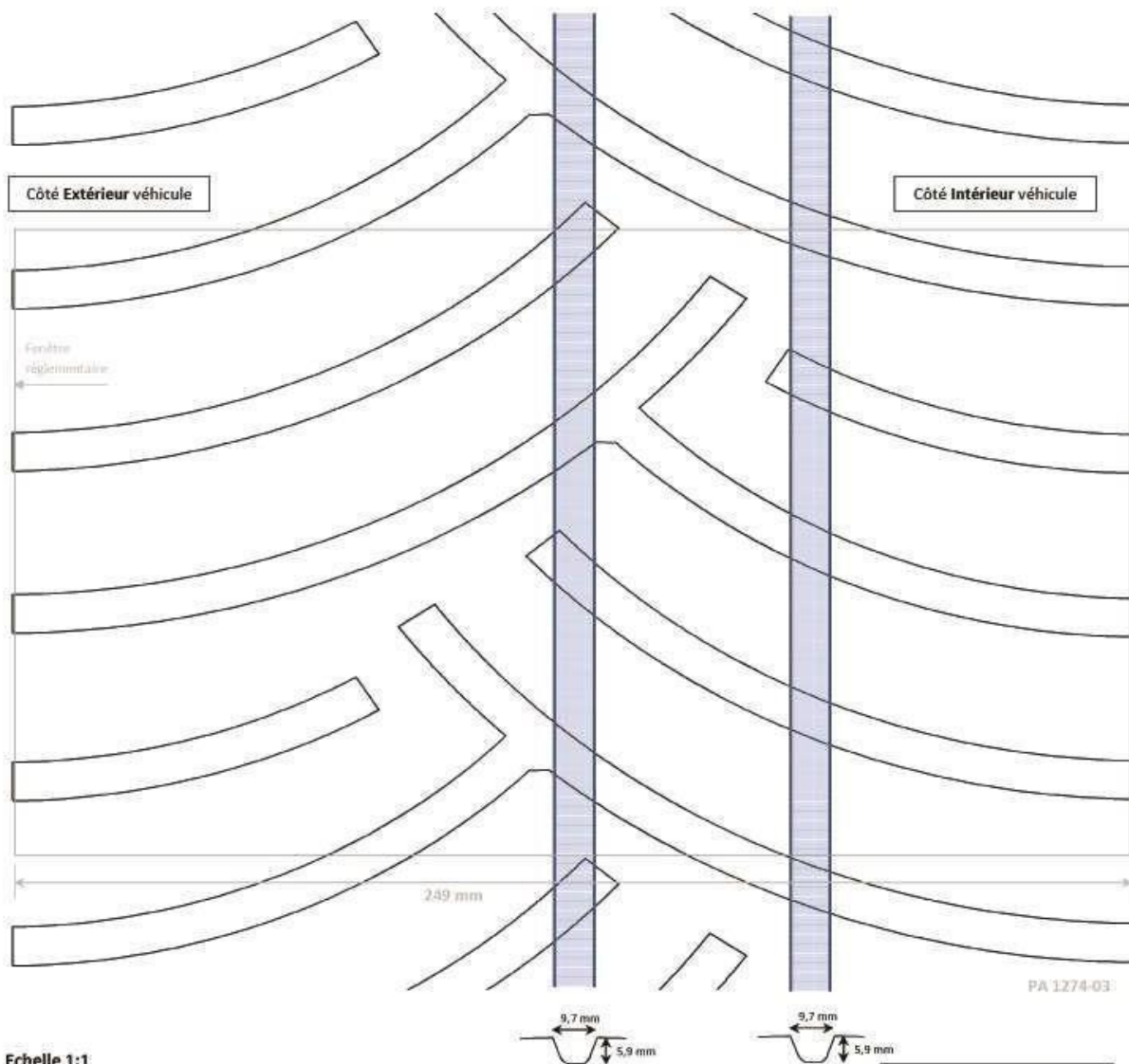
Domaine : Rallye Asphalte

Dimension : 29 / 65 – 18

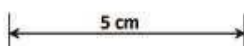
Entaillement surfacique sur fenêtre de 249 mm de large : 31 %

Clermont-Ferrand le 18/12/2013

Pneu Arrière Gauche



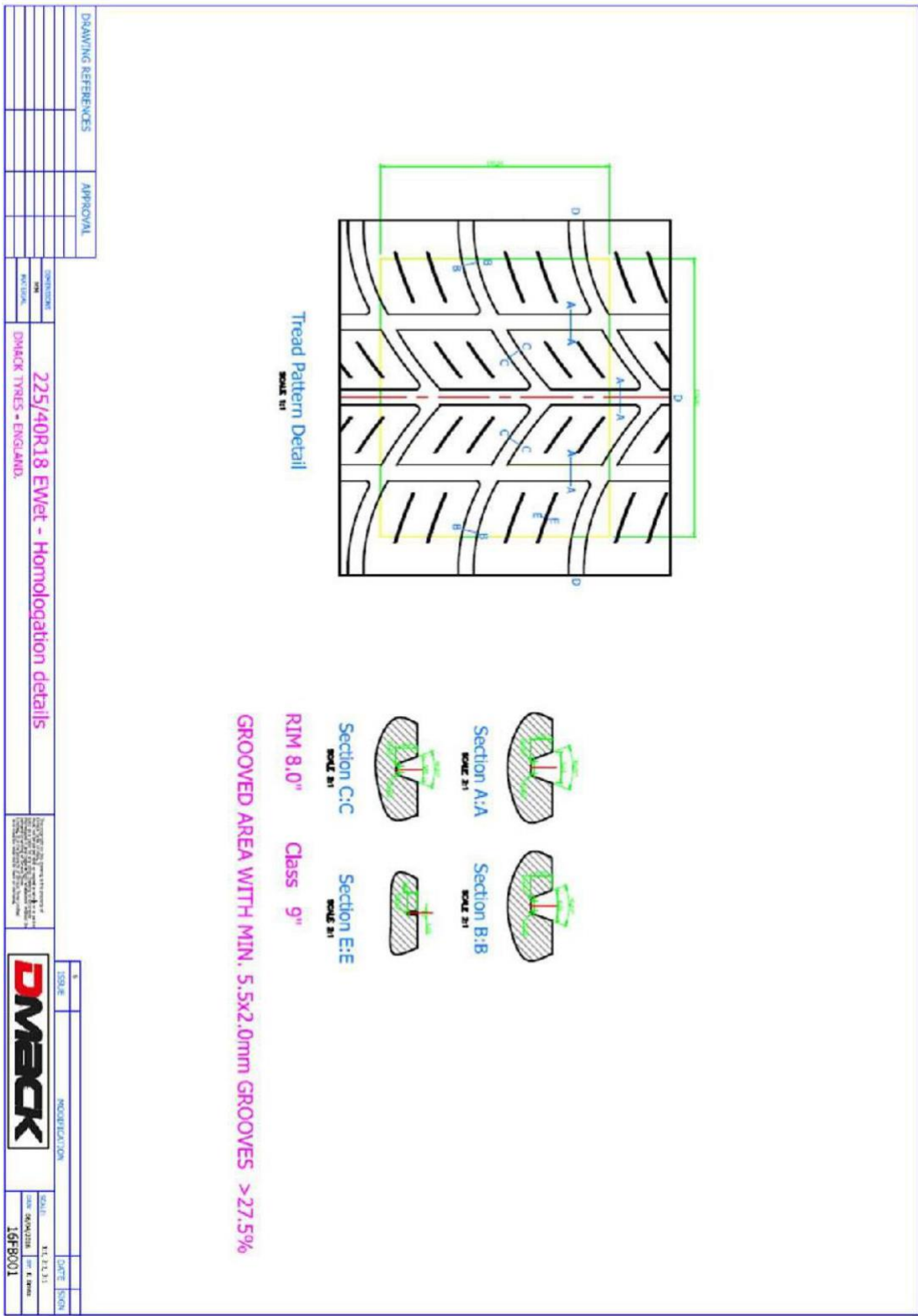
Echelle 1:1

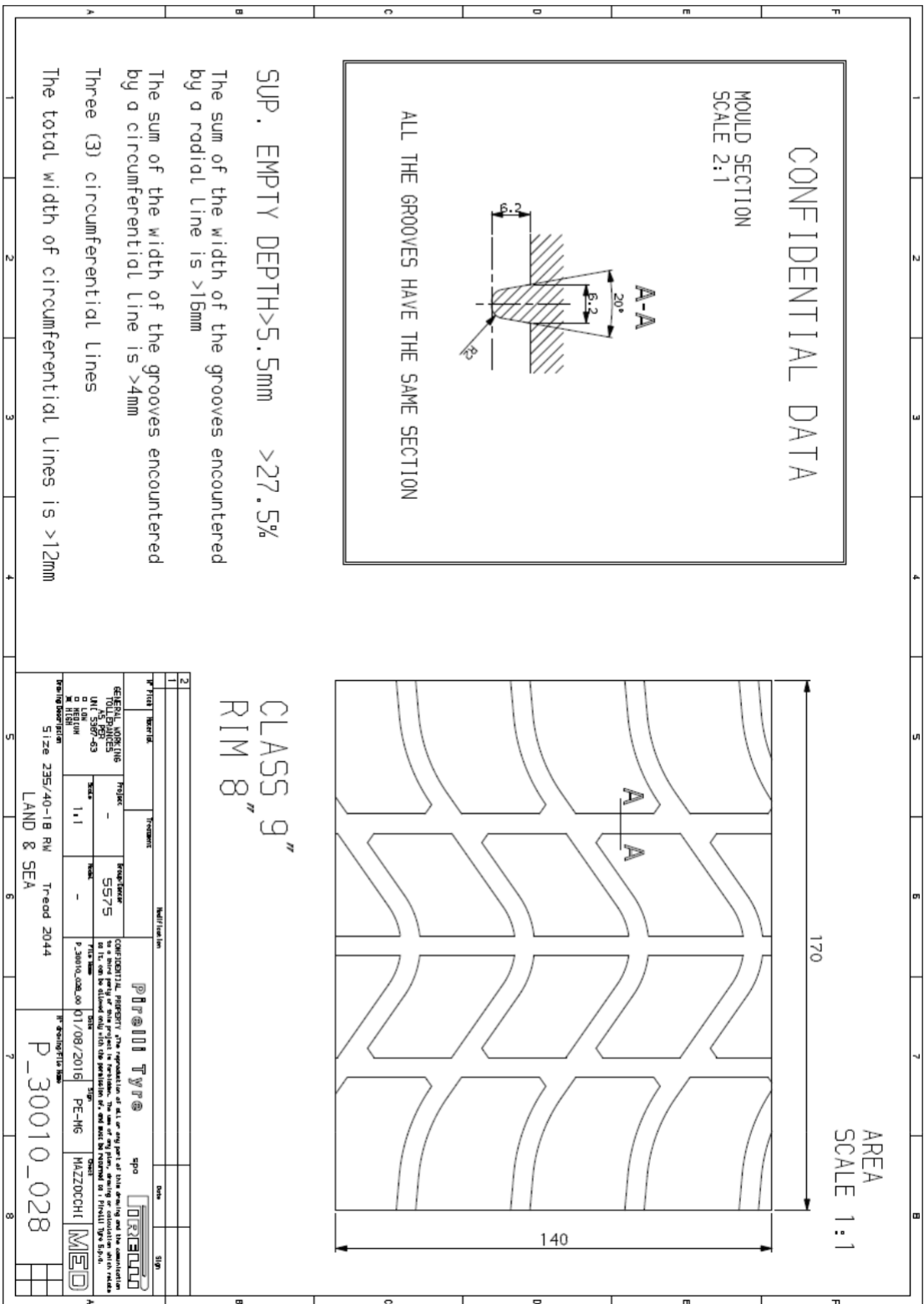


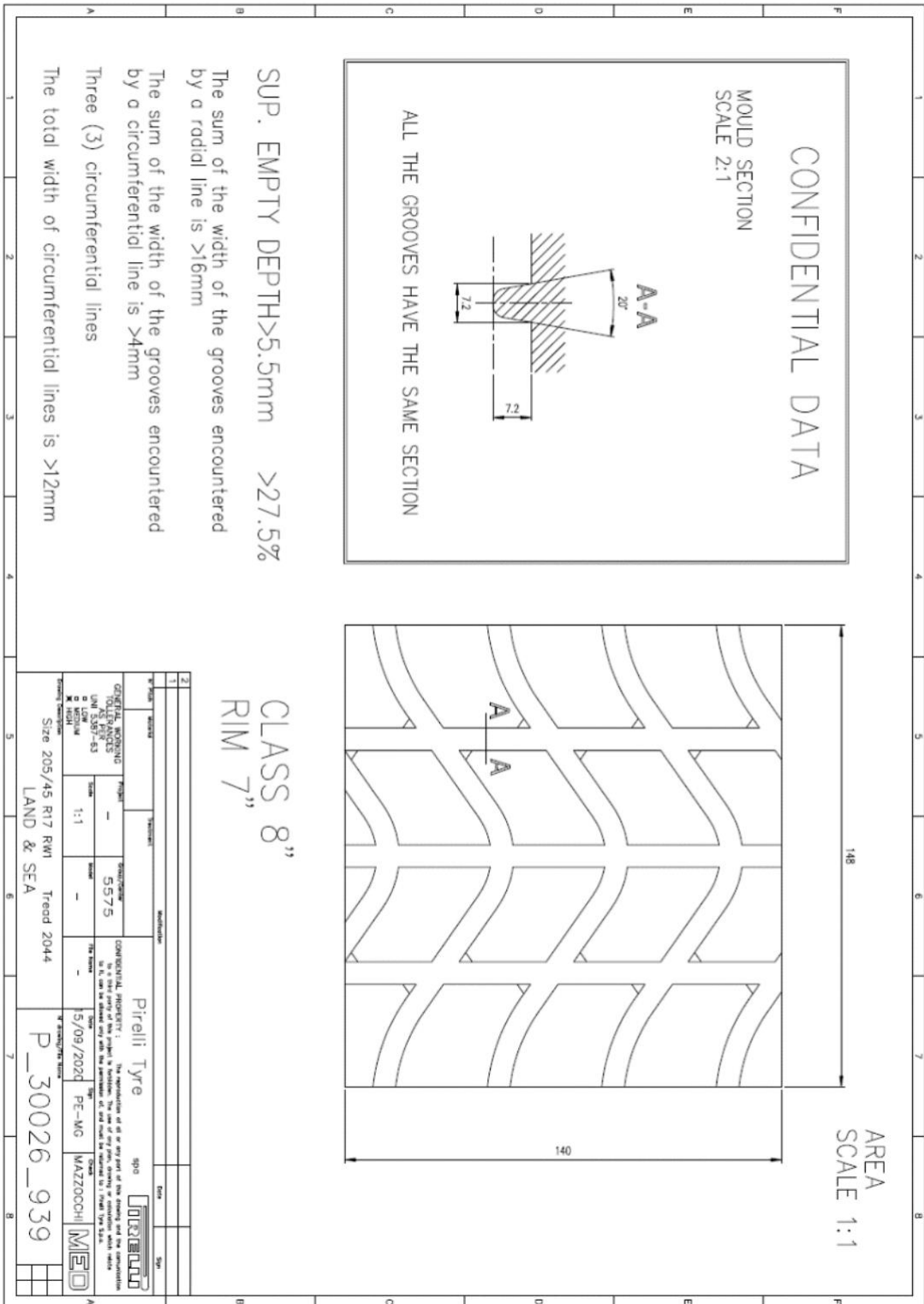
MANUFACTURE FRANCAISE DES  
PNEUMATIQUES MICHELIN  
CLERMONT-FERRAND

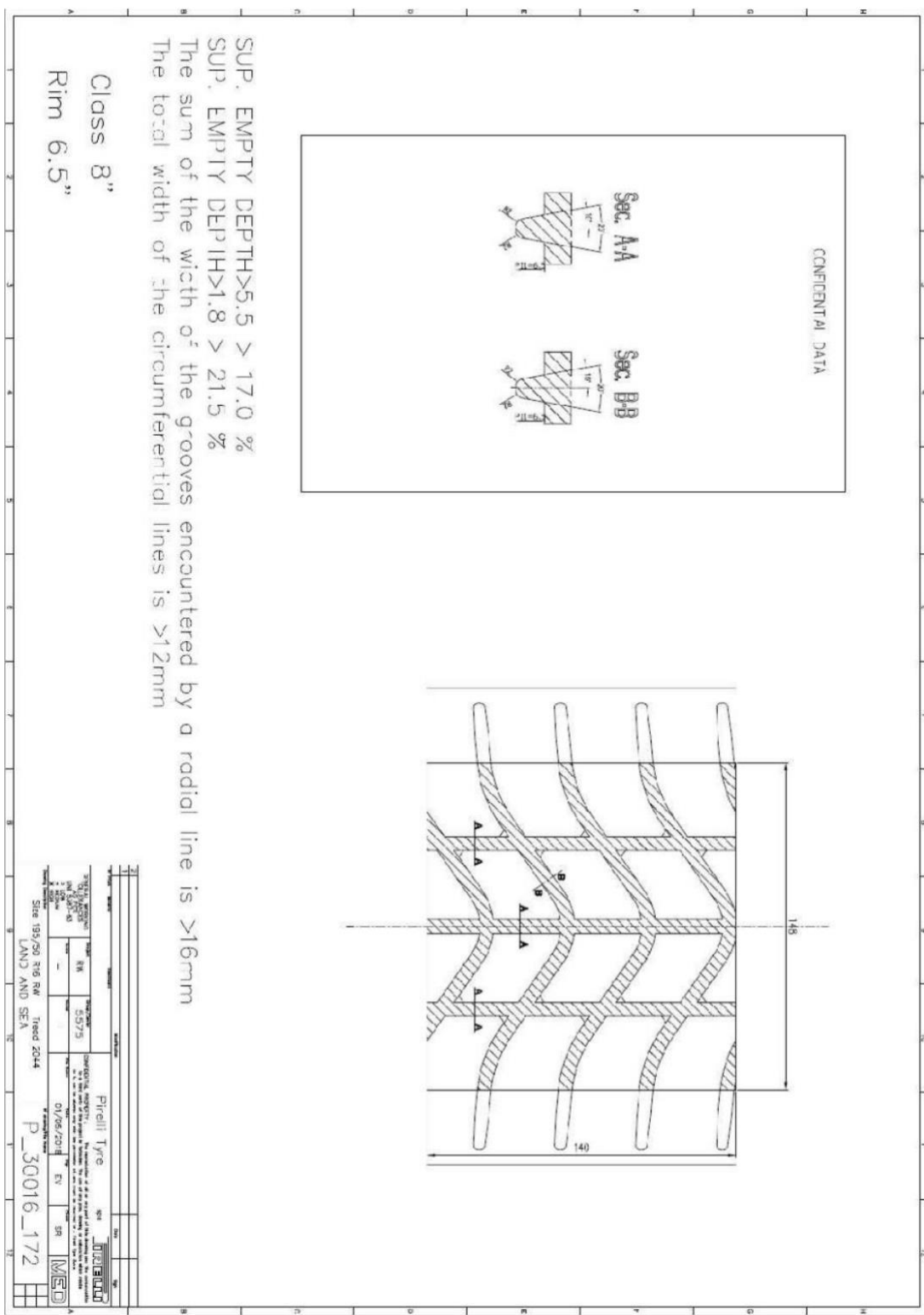
PROPRIETE EXCLUSIVE DE NOTRE  
SOCIETE REPRODUCTION OU  
UTILISATION INTERDITE SANS  
NOTRE ACCORD ECRIT





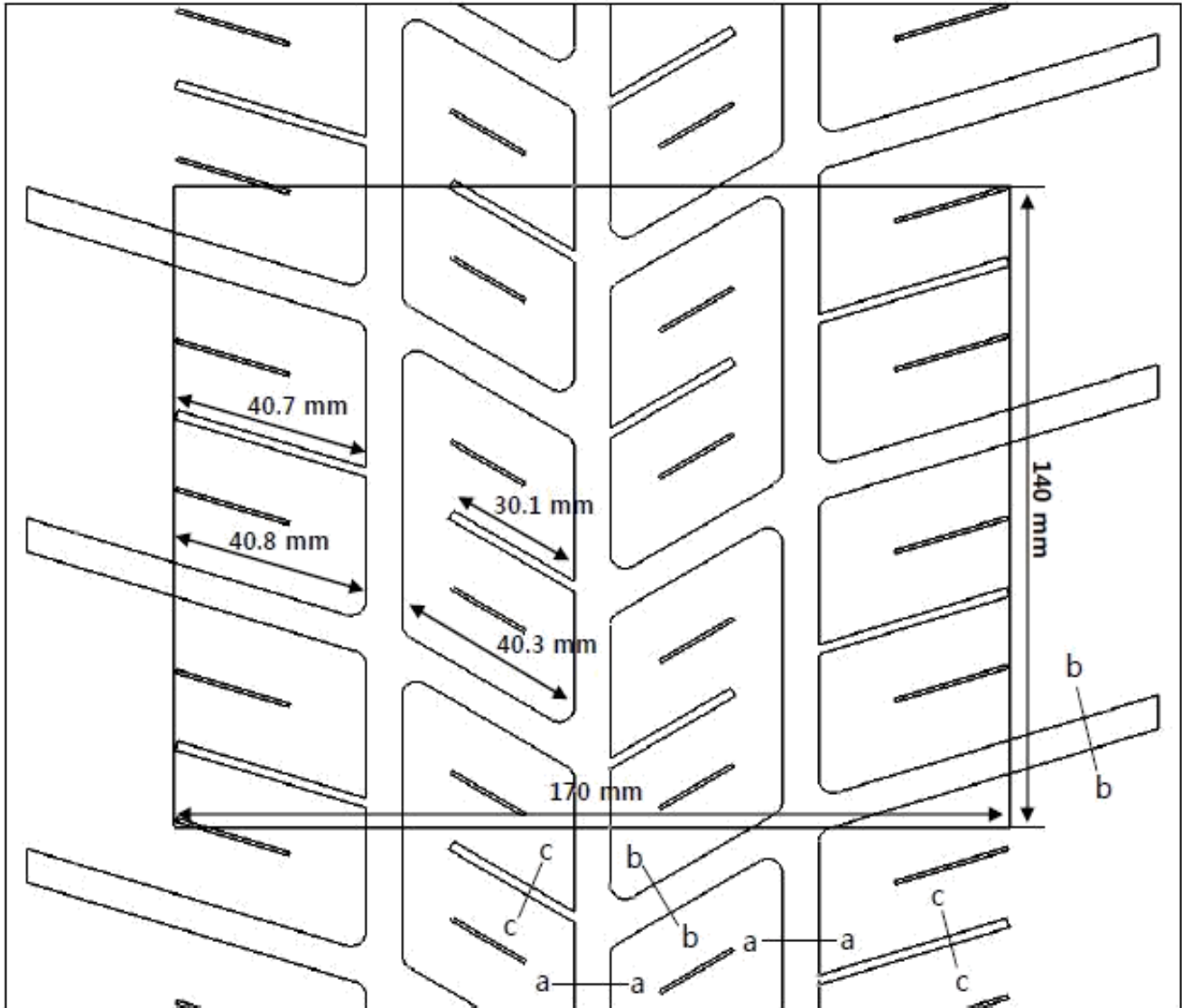






# 18" - 210/650R18

Product : Ventus Z210



## Class 9" (Rim 8")

a - a groove width / depth : 8.2 mm / 6.5 mm

b - b groove width / depth : 8.0 mm / 6.5 mm

Empty Depth > 5.5mm : 27.5%

Control Surface = 23800 mm<sup>2</sup>

SEC : a - a, b - b

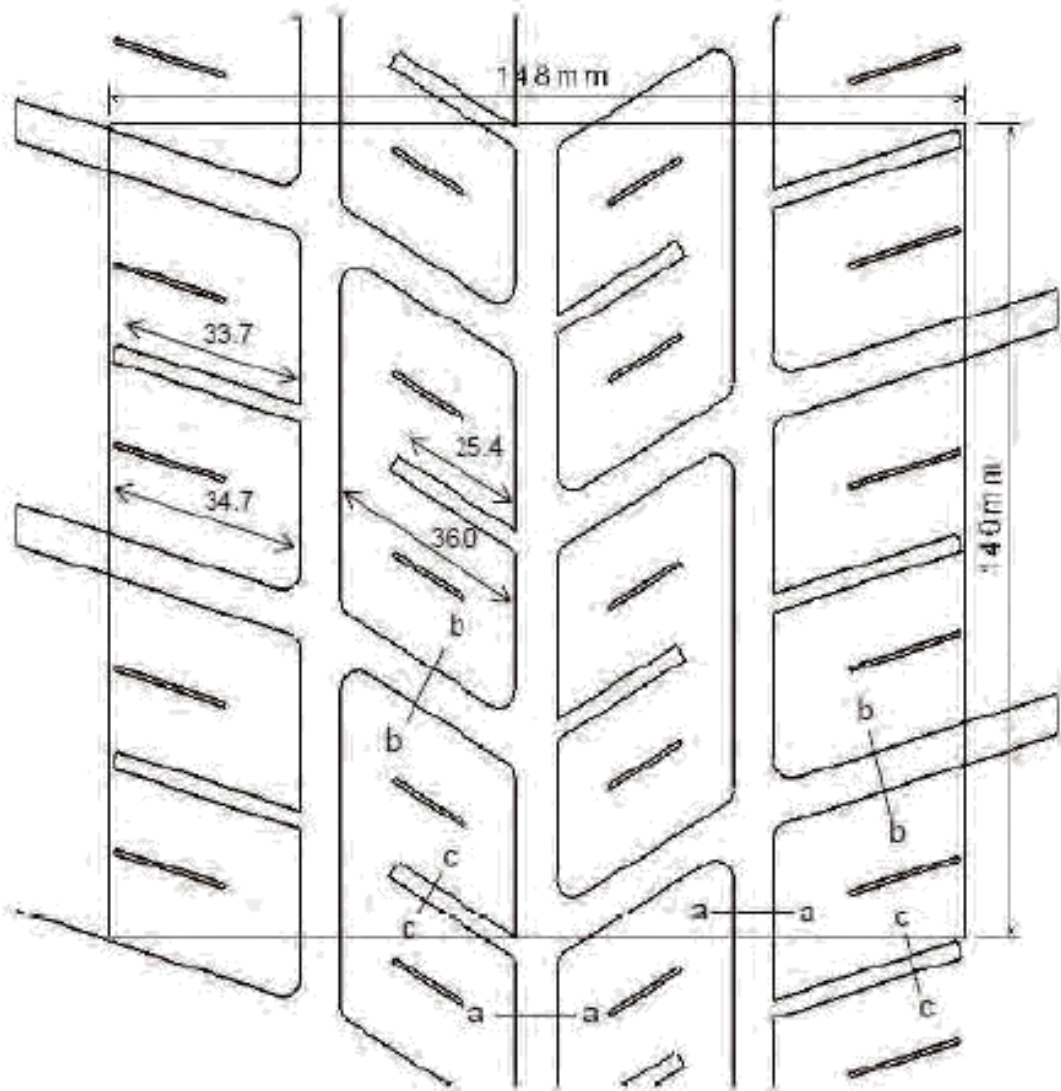
	w
a - a	8.2
b - b	8.0

SEC : c - c

5.5	2
-----	---

**17" - 180/625R17**

Product : Ventus Z210



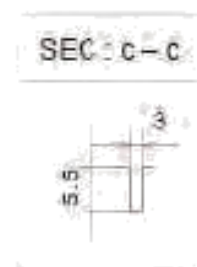
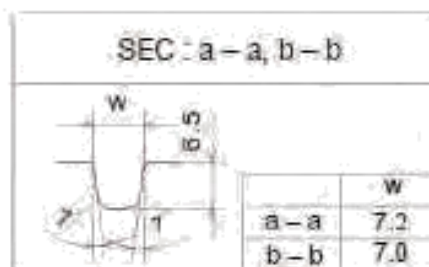
Width of Rim/Tyre Assembly : 7.5" ~ 8"

a - a groove width / depth : 7.2 mm / 6.5 mm

b - b groove width / depth : 7.0 mm / 6.5 mm

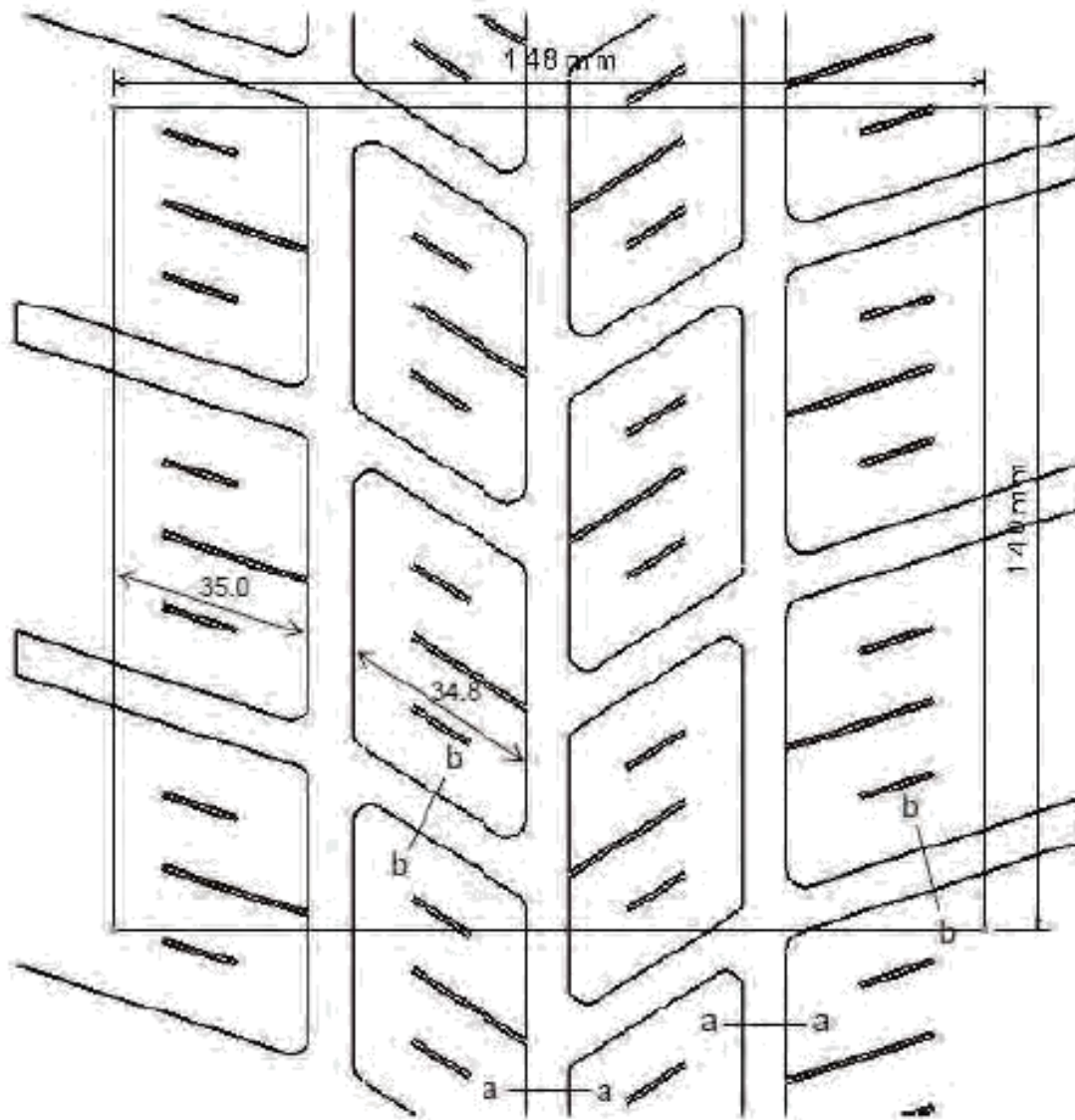
Empty Depth > 5.5mm : 27.5%

Control Surface = 20720 mm<sup>2</sup>



**16" - 180/600R16**

Product : Ventus Z210



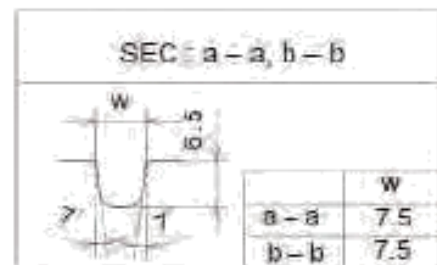
Width of Rim/Tyre Assembly : 7.5" ~ 8"

a - a groove width / depth : 7.5 mm / 6.5 mm

b - b groove width / depth : 7.5 mm / 6.5 mm

Empty Depth > 5.5mm : 27.5%

Control Surface = 20720 mm<sup>2</sup>



# 18"-210/645R18



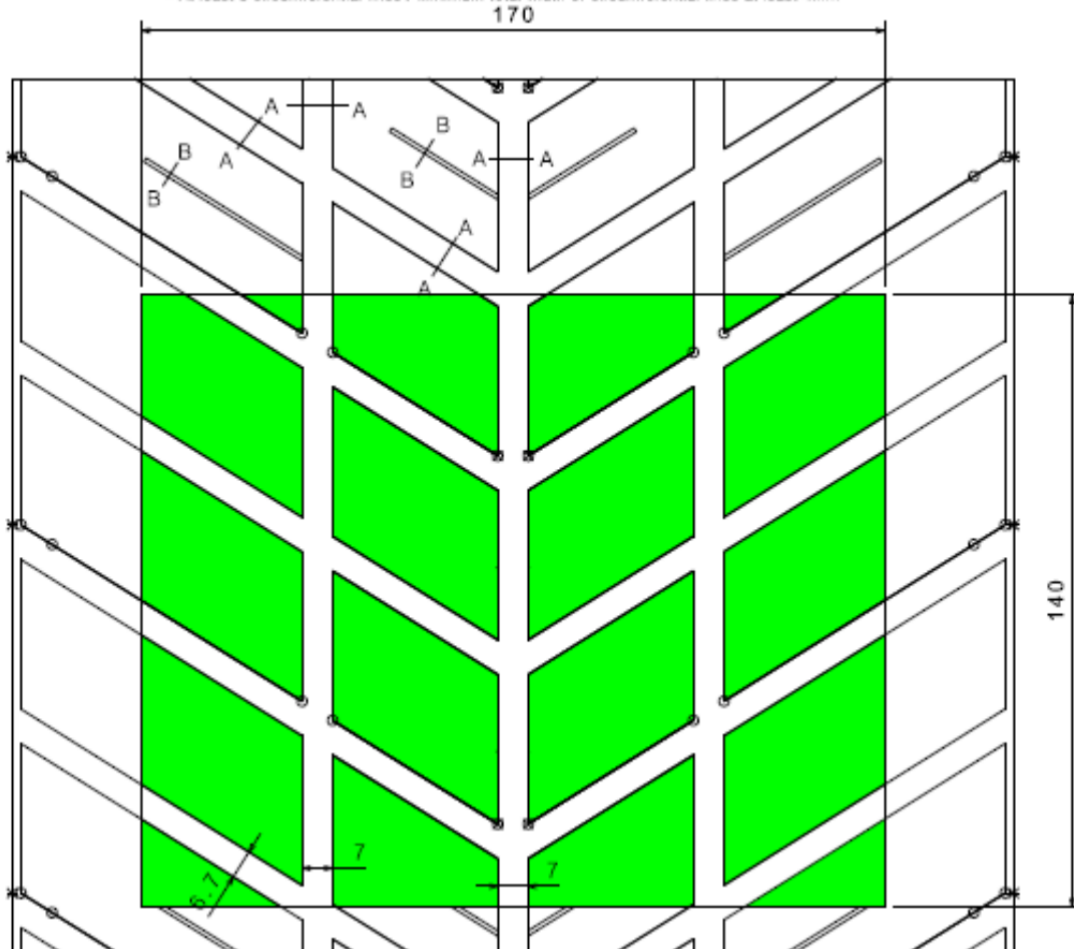
## KUMHO TYRES

Moulded tyre for FIA homologation

Size : 210/645R18

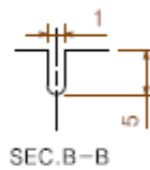
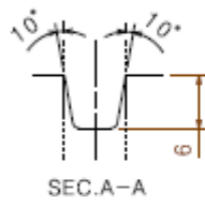
Pattern : TW03

- On the basis of a tread pattern width of 170mm and circumference of 140mm
- The surface taken up by grooves at least 5.5mm deep must occupy at least 27.5% of the total surface.
  - The sum of the width of the grooves encountered by a radial line must be at least 16mm
  - At least 3 circumferential lines / Minimum total width of circumferential lines at least 4mm



Scale: 1:1

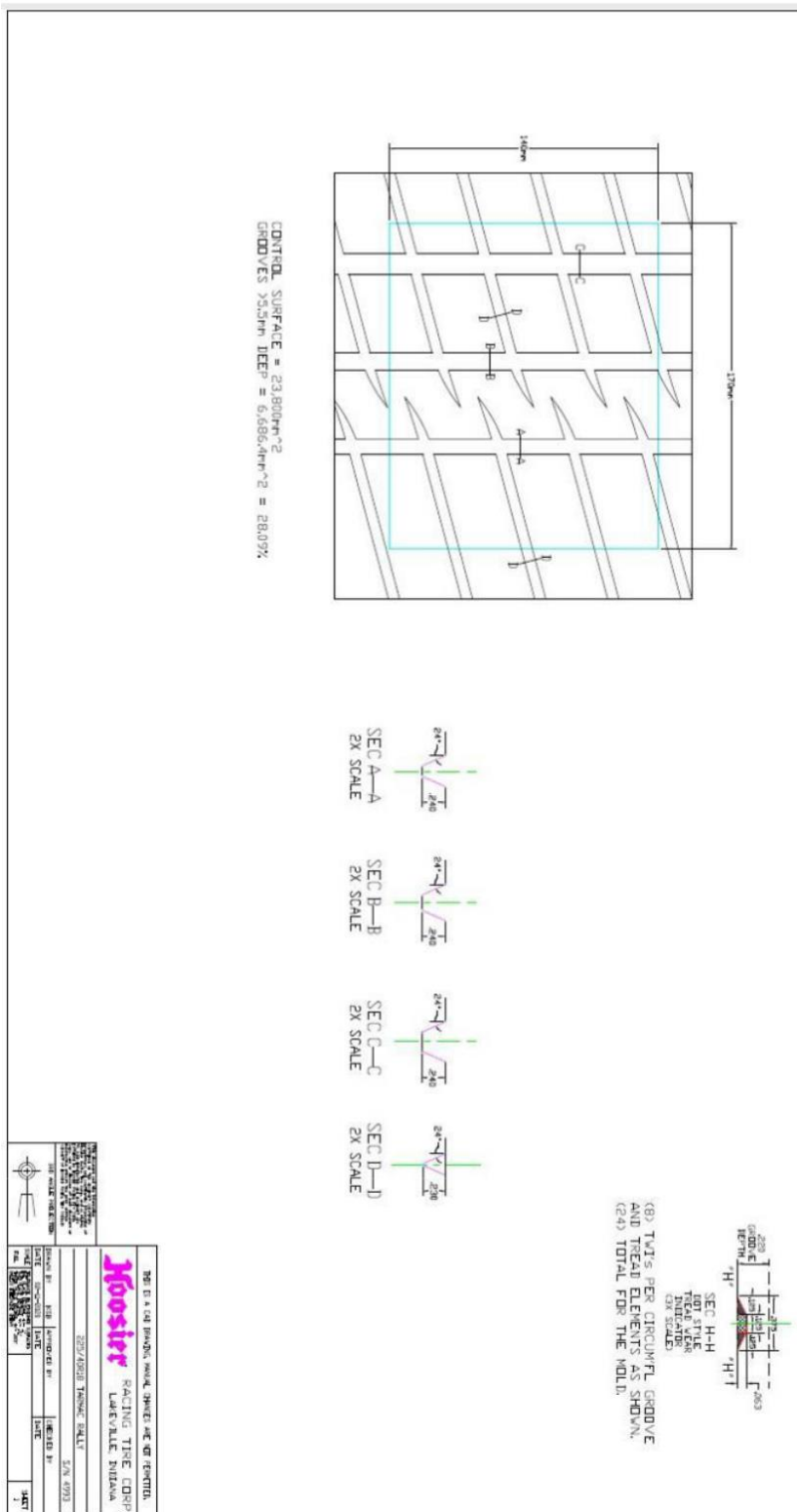
Groove Area by 170 x 140 at least 5.5mm deep : 6789.4mm<sup>2</sup>  
Void % : 28.5%





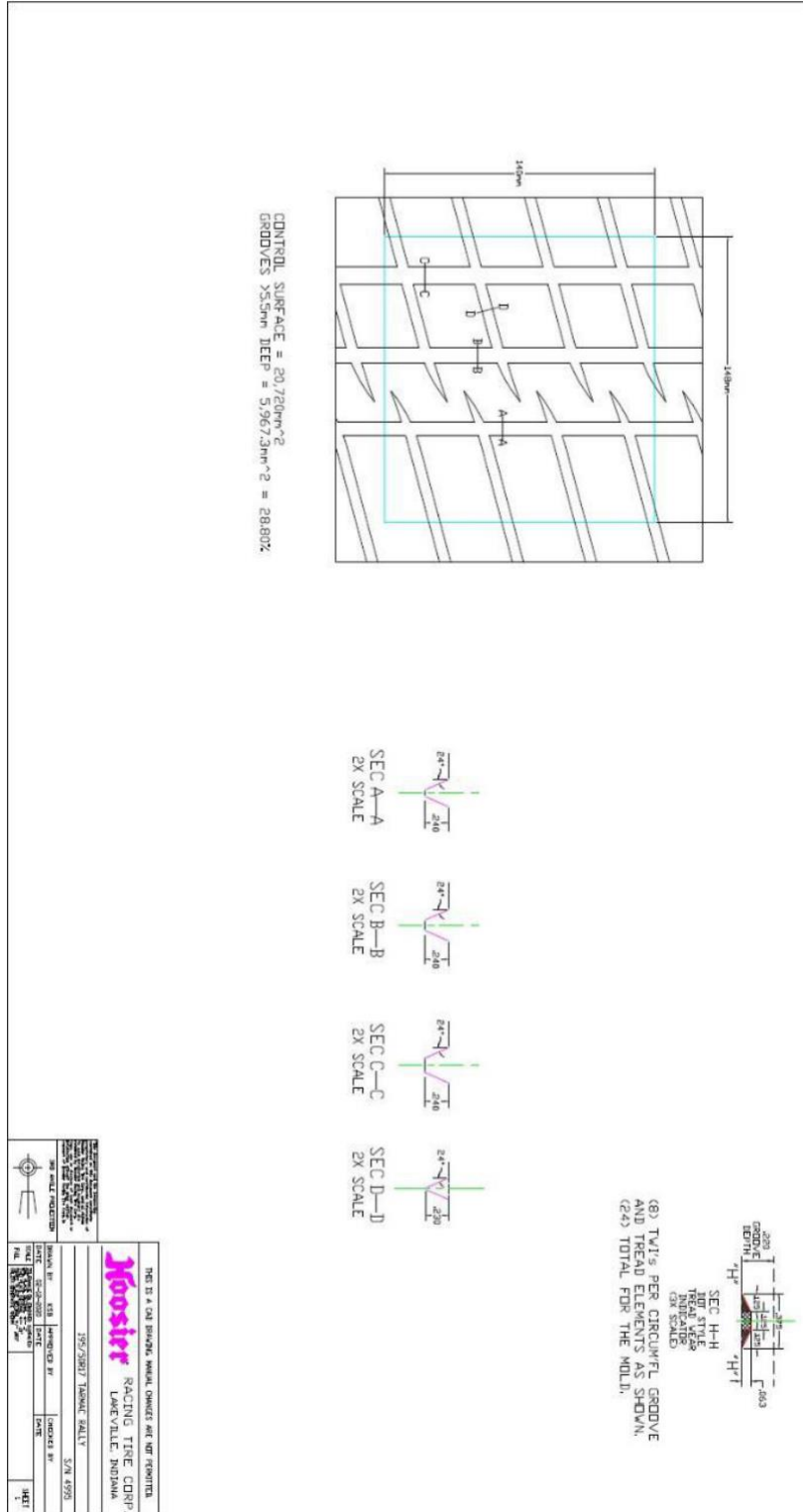
**18"-225/40R18**

**Hoosier**  
RACING TIRE



# Hoosier

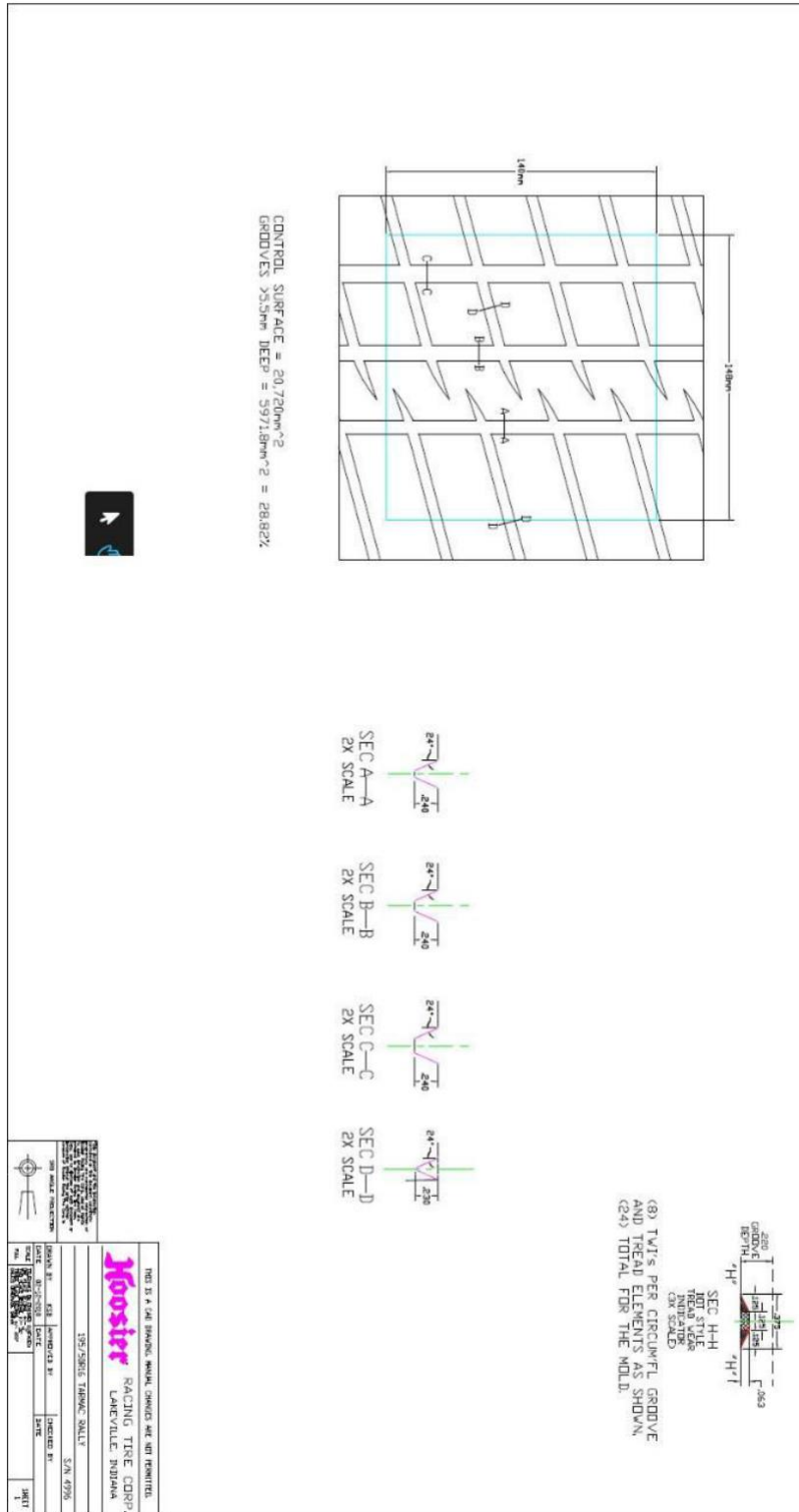
RACING TIRE



**16"-195/50R16**


# Hoosier

RACING TIRE



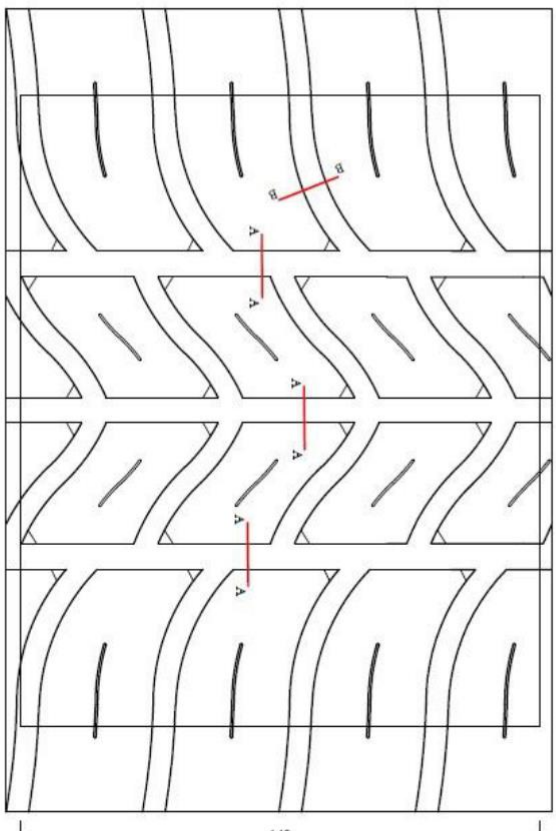


# MRF TYRES



## 235/40R18 ZWR1 TL

170




140


**In the control area 170x140 mm (indicated in the dotted line)**

- Grooved area within Min. 5.5 mm deep grooves > 27.5%
- The total width of the circumferential line is >12 mm
- The sum of the width of the grooves encountered by a radial line is >16 mm

**CLASS 9"**  
**RIM 8.0"**



SECTION: A-A



SECTION: B-B

S.No.	DATE	DESCRIPTIONS	DRAWN	VPRO / PDM

**CHENNAI**

**ZWR1**

INDIA

DRAWN

APPROVED

SCALE

SIGNATURE	G. Kumbhakar	T.N. Sridhar	NTS
DATE	10.02.2020	VPRO / PDM	17.02.2020

**F.I.A COMPLIANCE FOR 235/40R18 ZWR1 TL**

CORPORATE TECHNICAL MOLD DESIGN	DRG No.	RR-235/40R18_0720	REVISION No.
SAP DOCUMENT TYPE	SAP DOCUMENT No.	VER	

IF IN DOUBT ASK... NOT TO SCALE

At dimension in 1 mm. When otherwise specified.

THE DRAWING IS THE PROPERTY OF MRF LTD. AND NOT TO BE LOANED, REPRODUCED, COPIED, OR REPRODUCED IN ANY MANNER WITHOUT THE WRITTEN PERMISSION OF MRF LTD. ANY OTHER REPRODUCTION OF THIS DRAWING WITHOUT THE WRITTEN PERMISSION OF MRF LTD. SHALL BE CONSIDERED AS AN ACT OF INFRINGEMENT OF THE PATENT RIGHTS OF MRF LTD. AND WILL BE PROSECUTED TO THE FULL EXTENT OF THE LAW.



## MRF TYRES

**205 / 45 R17 ZWR1 TL**

148.0

140.0

**CLASS 8"**  
**RIM 7.0"**

Grooved area within Min. 5.5 deep grooves > 27.5%  
The total width of the circumferential line is >12 mm  
The sum of the width of the grooves encountered by radial line is >16 mm

**F.I.A COMPLIANCE FOR 205 / 45 R17 ZWR1 TL**

DRAWN		CHECKED/ISSUED		APPROVED		SCALE
SIGNATURE	DATE	SIGNATURE	DATE	SIGNATURE	DATE	M/S

COMPONENT TECHNICAL MODEL NUMBER: **FA-0001**

SAP DOCUMENT TYPE:  SAP DOCUMENT No.:  VER:

CHENNAI **MRF** INDIA

BEFORE THE PURCHASE OF ANY OF OUR TYRES PLEASE CONSULT THE TECHNICAL STAFF OF THE NEAREST MRF TYRE STORE FOR THE MOST RECENT INFORMATION ON THE TYRE'S CHARACTERISTICS AND USE. THE INFORMATION IS SUBJECT TO CHANGE WITHOUT NOTICE. WE RESERVE THE RIGHT TO MODIFY THE TYRE'S CHARACTERISTICS AND USE WITHOUT NOTICE. THE INFORMATION IS SUBJECT TO CHANGE WITHOUT NOTICE. WE RESERVE THE RIGHT TO MODIFY THE TYRE'S CHARACTERISTICS AND USE WITHOUT NOTICE.



# MRF TYRES

**SECTION A-A**

**MRF 195 / 50 R16 ZWR1 TL**

148.0

140.0

**CLASS 8"**

**RIM 6.5"**

In the control area 148 x 140 mm (Indicated in the Dotted Line)

Grooved area within Min. 5.5 deep grooves > 27.5%

The total width of the circumferential line is >12 mm

The sum of the width of the grooves encountered by radial line is >16 mm

CHENNAI		MRF		NCH	
DESIGNER	DRAWN	APPROVED	SCALE	DATE	BY
	D:\Found		NIS		
	HEAD-QUARTER				
	10/02/2011				

**F.I.A COMPLIANCE FOR 195/50 R16 ZWR1TL**

COMPANY TECHNICAL WOULD DESIGN      DRG No.      F/A-0002

SAP DOCUMENT NO.      SAP DOCUMENT NO.      YES      NO

THE DRAWING IS THE PROPERTY OF MRF LTD. AND IS LOANED TO THE CUSTOMER FOR HIS USE ONLY. IT IS NOT TO BE REPRODUCED OR TRANSMITTED IN ANY FORM OR BY ANY MEANS, ELECTRONIC OR MECHANICAL, INCLUDING PHOTOCOPYING, RECORDING, OR BY ANY INFORMATION STORAGE AND RETRIEVAL SYSTEM, WITHOUT THE WRITTEN PERMISSION OF MRF LTD. THE CUSTOMER SHALL BE RESPONSIBLE FOR THE PROTECTION OF THIS DRAWING AND SHALL NOT BE HELD RESPONSIBLE FOR ANY LOSS OR DAMAGE TO IT. THE CUSTOMER SHALL BE RESPONSIBLE FOR THE PROTECTION OF THIS DRAWING AND SHALL NOT BE HELD RESPONSIBLE FOR ANY LOSS OR DAMAGE TO IT. THE CUSTOMER SHALL BE RESPONSIBLE FOR THE PROTECTION OF THIS DRAWING AND SHALL NOT BE HELD RESPONSIBLE FOR ANY LOSS OR DAMAGE TO IT.



# MRF TYRES

**195 / 50 R15 ZWR1 TL**

**In the control area 148 x 140 mm (Indicated in the Dotted Line)**

Grooved area within Min. 5.5 deep grooves > 27.5%

The total width of the circumferential line is >12 mm

The sum of the width of the grooves encountered by radial line is >16 mm

**CLASS 8"**

**RIM 6.5"**

DRAWING		APPROVED		SCALE
DESIGNER	UNIVERSAL	APPROVED		1:1
DATE	18.02.2021	DESIGNER	UNIVERSAL	

**F.I.A COMPLIANCE FOR 195/50 R15 ZWR1TL**

CONFORMANCE TECHNICAL WORLD DESIGN: **FA-0003**

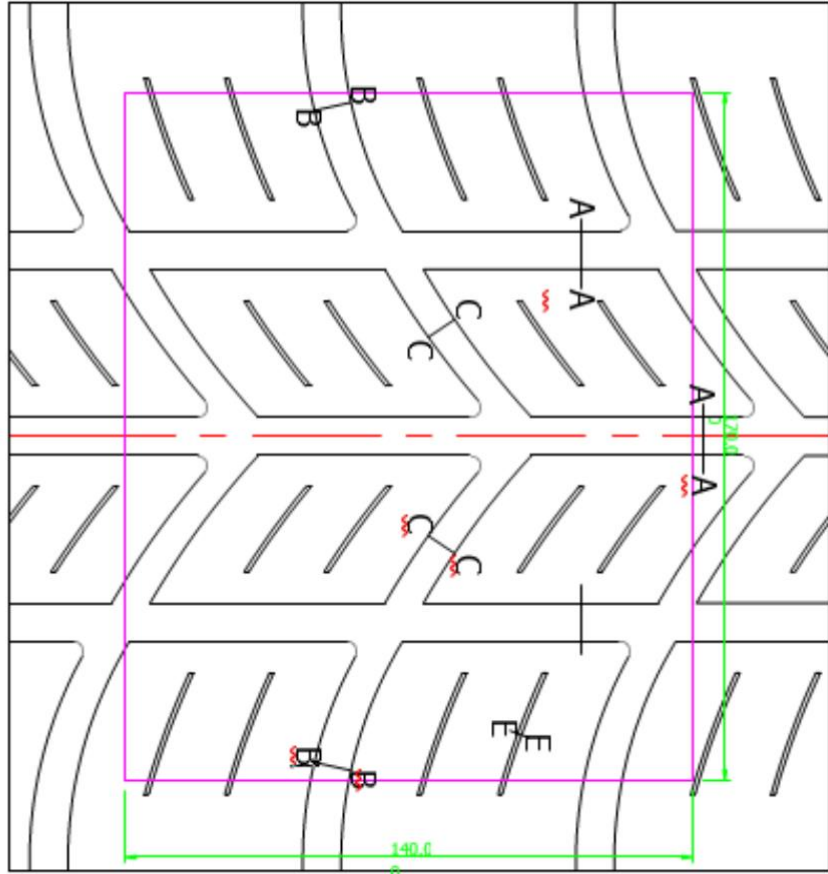
DATE OF DOCUMENT: 18.02.2021

**CHENNAI**

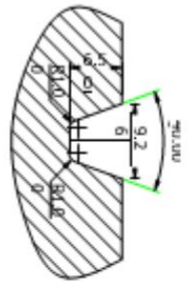
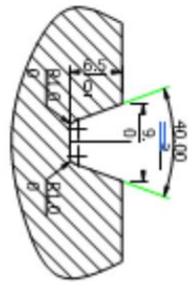
**MRF**

**INDIA**

REVISION No. **00**

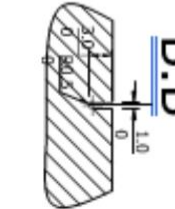
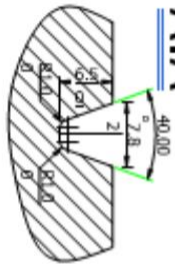


Grooved Area with min 5.5mm > 27.5%



Section A:A  
SCALE 2:1

Section B:B  
SCALE 2:1

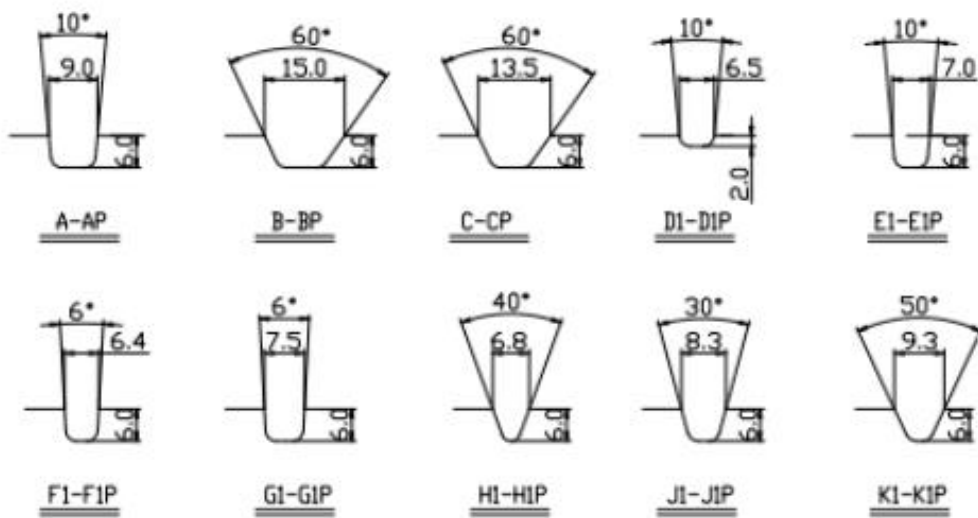
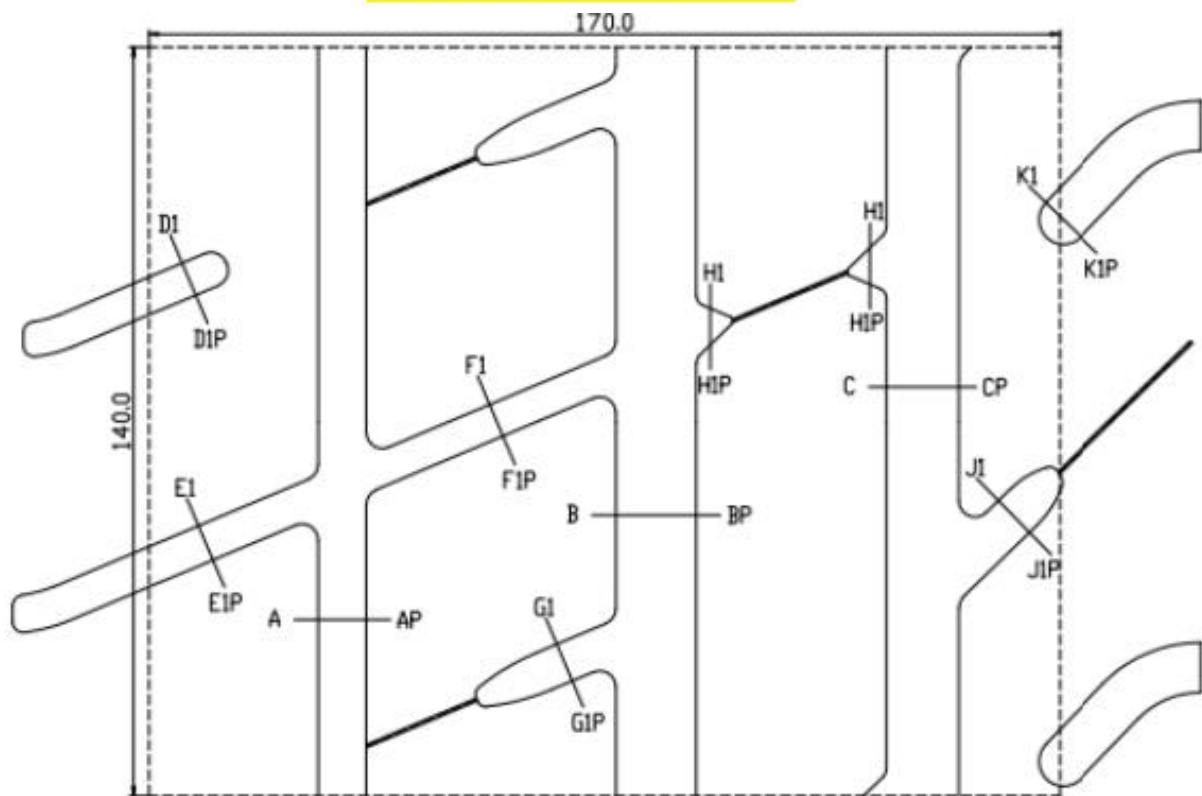


Section C:C  
SCALE 2:1

Section E:E  
SCALE 2:1

DRAWING REFERENCES		APPROVED BY		SCALE	
DIMENSIONS		COOPER TIRES		1:1, 2:1	
LUBRICATION LABORATORIES LTD - 44, JIJ TUNISIA		DATE		14/06/21	
COOPER TIRES & RUBBER EUROPE LTD, MELKSHAM WILTSHIRE ENGLAND.		REV		15P	
		DRAWN BY		A3	
		CHECKED BY		VAV	
		DATE		2021	

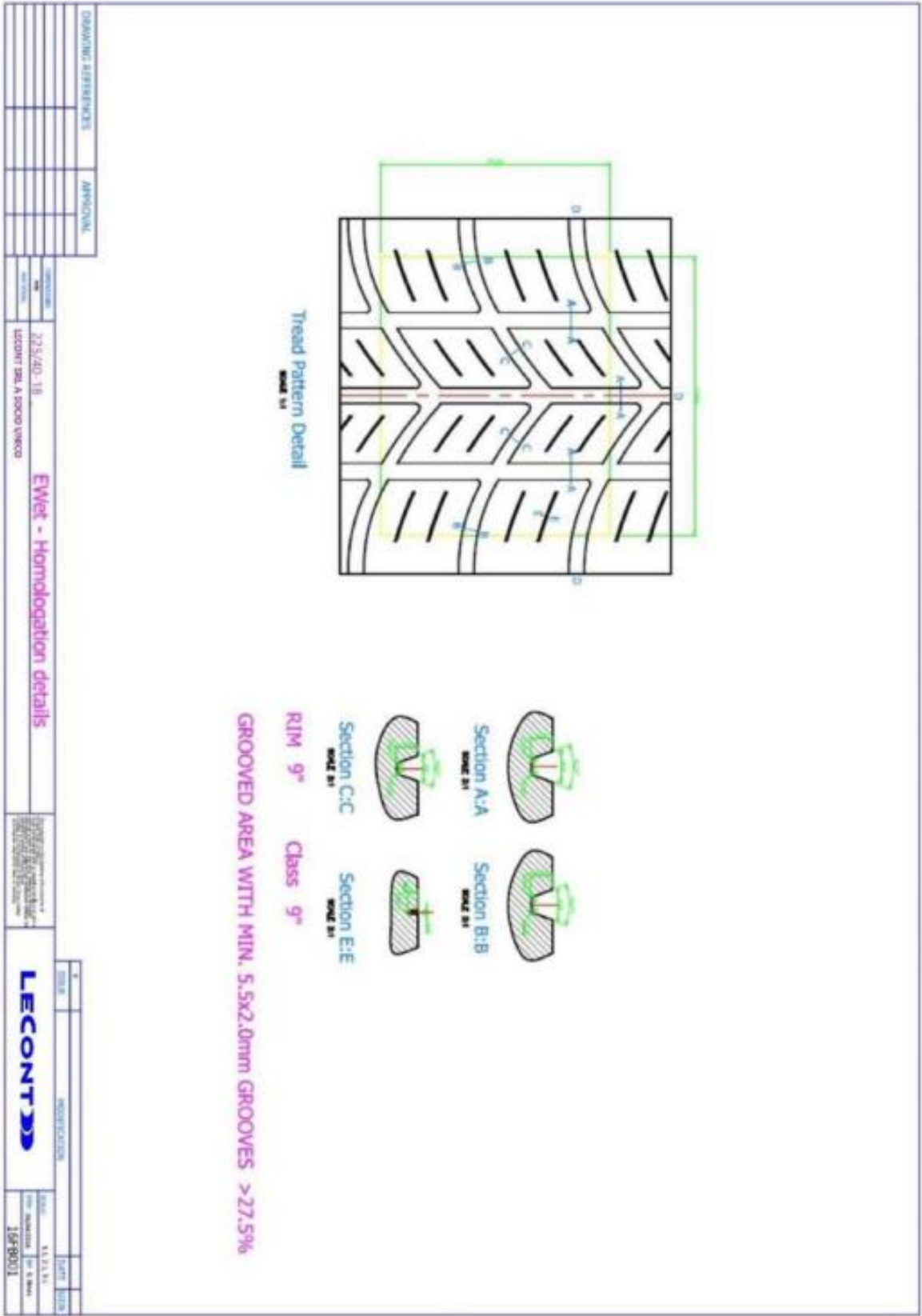




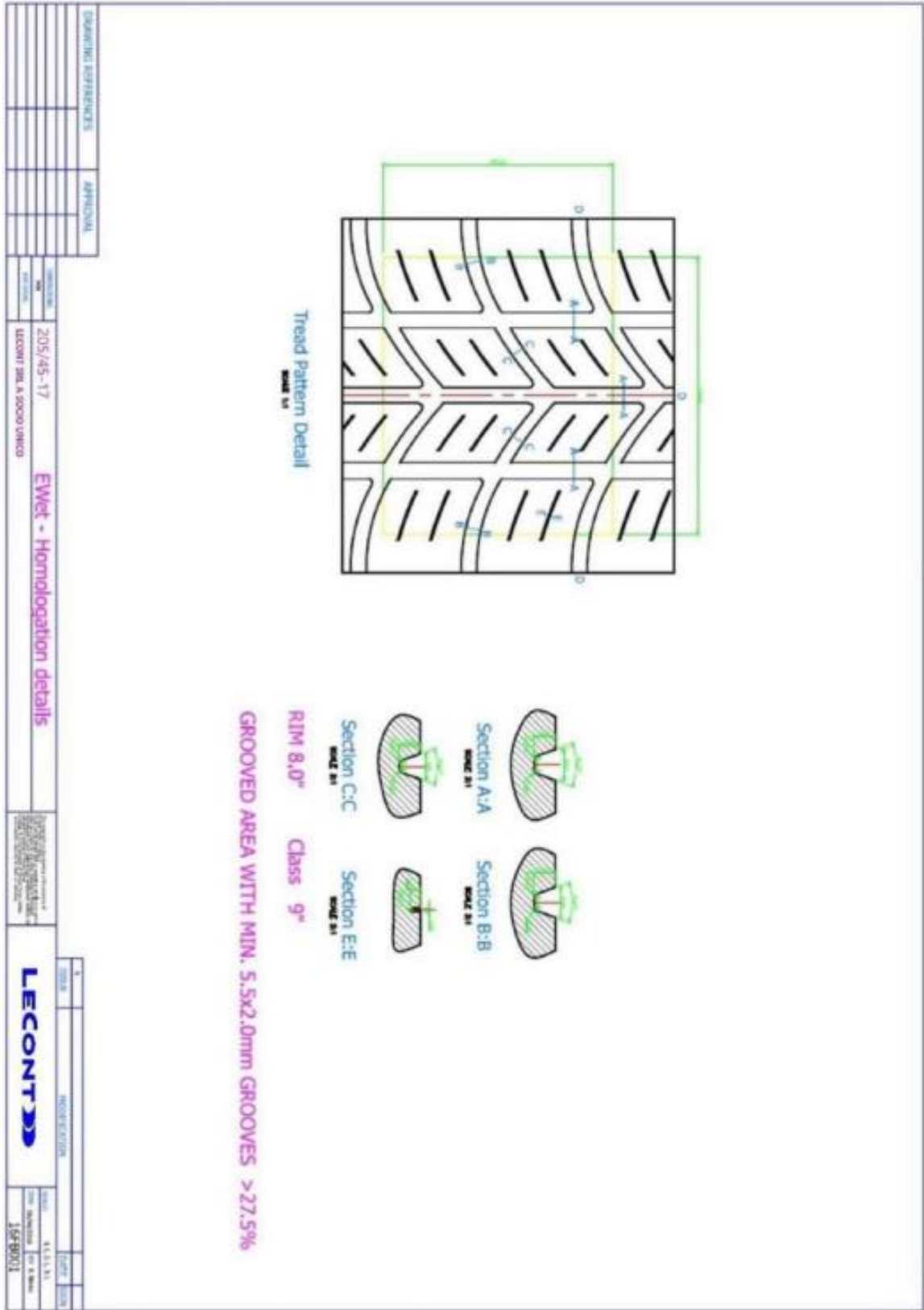
Control Area 23800(170X140)	 SUMITOMO RUBBER INDUSTRIES, LTD. MOTOR SPORTS DEPARTMENT	Size · Pattern
Grooved Area Depth >5.5mm    27.7%		210/650R18 DIREZZA 201R

**18"-225/40-18**

# LECONT



# LECONT




**16"-195/50-16**

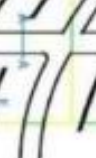
# LECONT

DRAWING REFERENCES	APPROVAL


195/50-16  
**LECONT SER. A 5000 UNICO**  
**Ewet - Homologation details**




**Tread Pattern Detail**




Section A:A  
SCALE 1:1



Section B:B  
SCALE 1:1



Section C:C  
SCALE 1:1



Section E:E  
SCALE 1:1

RIM 8.0"      Class 8.0"

GROOVED AREA WITH MIN. 5.5x2.0mm GROOVES >27.5%

1. DATE


2. REVISION

**LECONT**

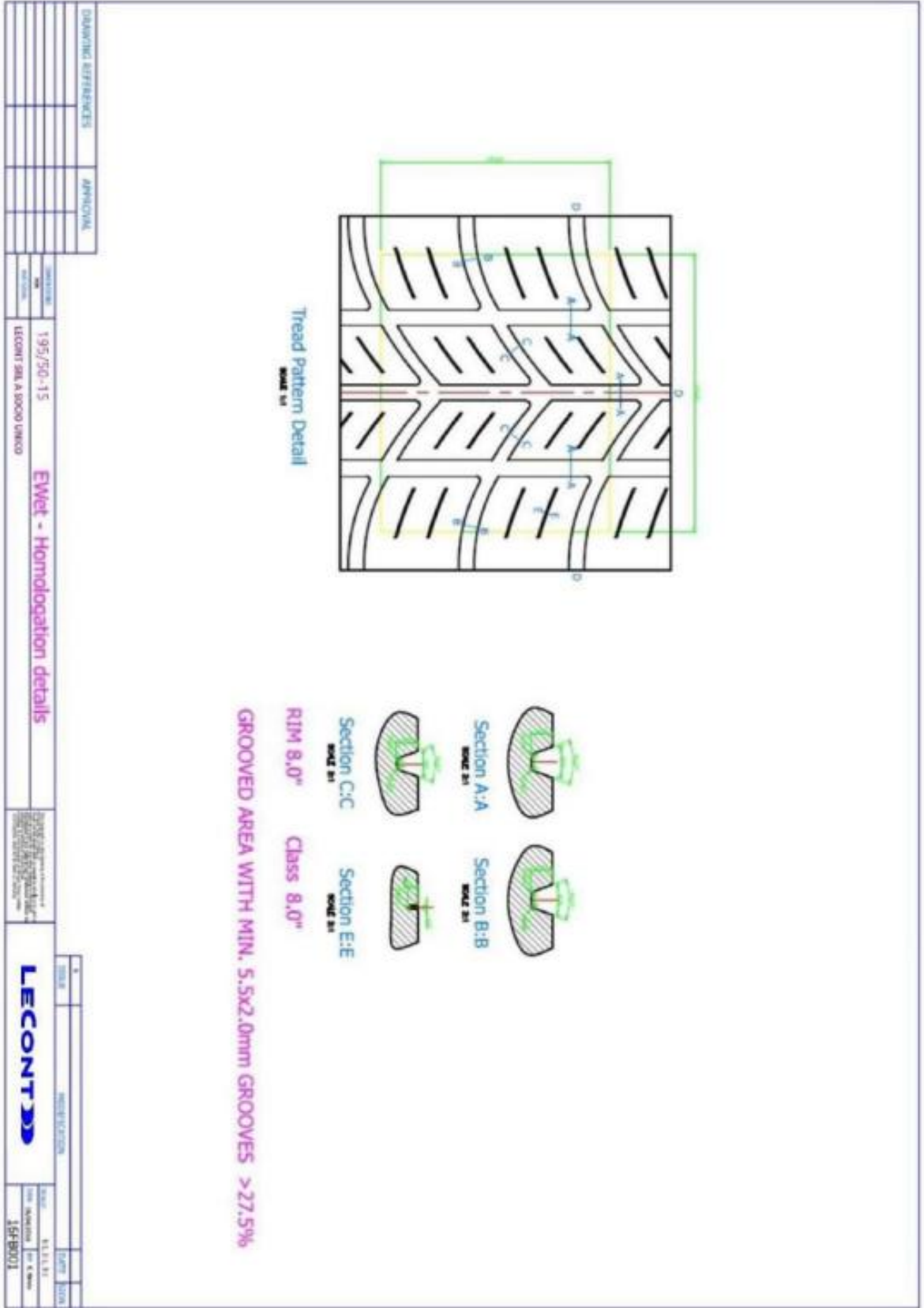
3. SCALE

4. SHEET NO. OF 5 SHEETS

1649001

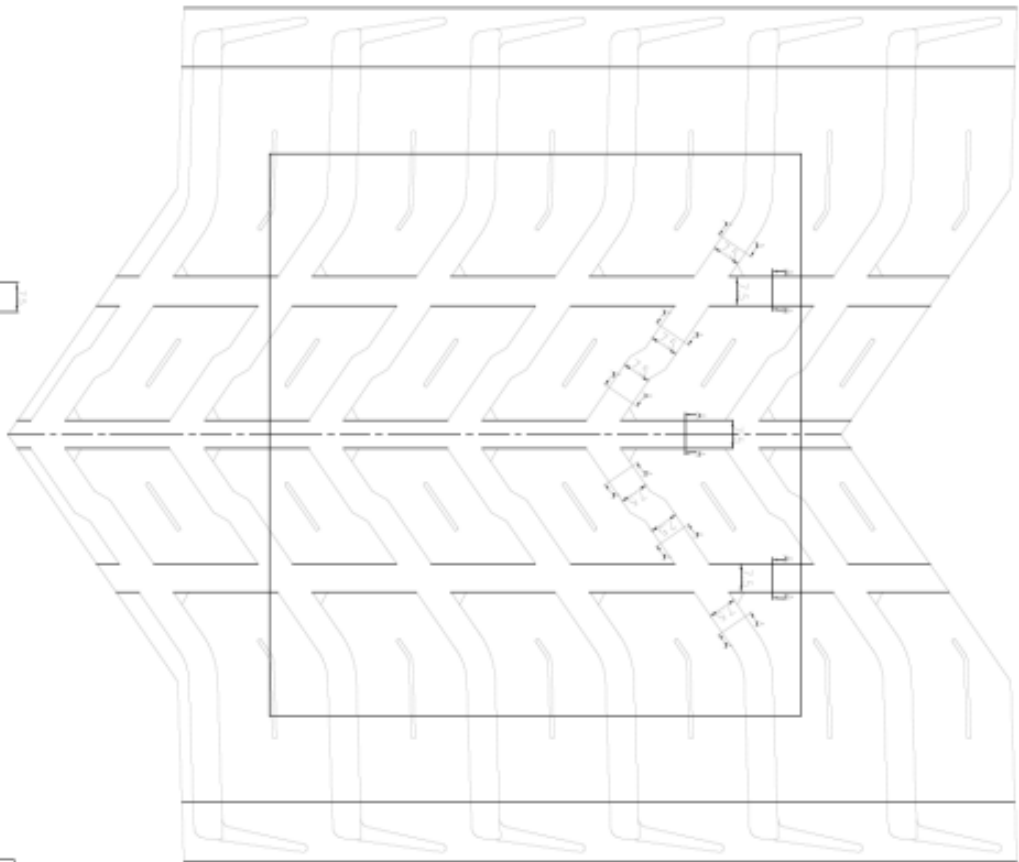


# LECONT



**petlas**

IN CONTROL AREA -----148X140  
 EMPTY DEPTH>5.5mm 36%



<b>petlas</b>		TIRE INDUSTRY & TRADE CO.		TIRE	
DRIVER		DATE		REVISION	
PROJECT		SCALE		DESIGN	
MODEL					
SIZE					
			205/45R17		
			RALLY TARMAO VET		
DATE		SCALE		DRIVER NO.	